

**Overview**

SPX Heat Transfer LLC provides replacement OEM parts for a broad range of steam surface condensers, shell and tube exchangers and feedwater heaters. We currently support the following legacy brands.

- ABB Alstom Power Inc
- Alstom Power Inc
- Ecolaire Heat Transfer Co
- GEC Alsthom
- Joy Power Products
- Alstom Energy Systems
- Ecolaire Condenser
- Ecolaire Process Management Co
- Ingersoll Rand
- Yuba Heat Transfer, LLC

**Condenser Parts**

- Air Release Valves
- Dome Hood Spray Nozzles
- Gaskets
- Manway Assemblies
- Tube Plugs
- Basket Tips
- Expansion Joints
- Level Gauges
- Rupture Discs
- Water Box Anodes

**Life Extension Condenser Parts**

- Tubes
- Water Boxes
- Tube Sheets

**Shell and Tube Exchanger and Feedwater Heater Parts**

- Channel Anodes
- Diaphragms
- Manway Gaskets
- Pass Plate Kits
- Torus Rings
- Channel Cover Gaskets
- Header Plugs and Gaskets
- Partition Cover Gaskets
- Safety Relief Valves
- Tube Plugs



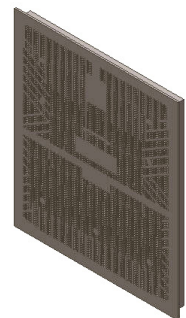
Condenser Waterbox



Condenser and Feedwater Heater Tubes



Condenser Tube Plug



Condenser Tube Sheet

**YUBA**<sup>®</sup>

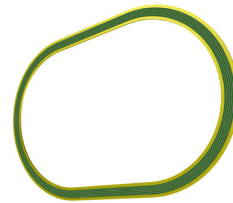
**ECOLAIRE**<sup>®</sup>



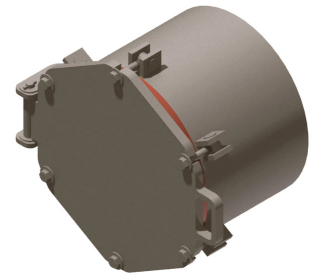
Feedwater Heater Torus Ring



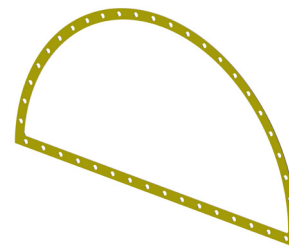
Condenser Basket Tip



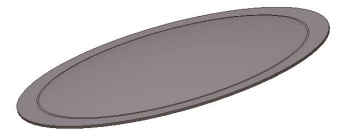
Feedwater Heater Obway Manway Gasket



Condenser Manway Assembly



Feedwater Heater Pass Partition Gasket



Condenser Rupture Disc

**Mosser Damper Parts**

- Actuators
- Butterfly Dampers
- Inflatable Seals
- Spring Seals
- Bearings
- Chains
- Shafts

**Ejector Parts**

- Bodies
- Gaskets
- Nozzles

**Engineering Services**

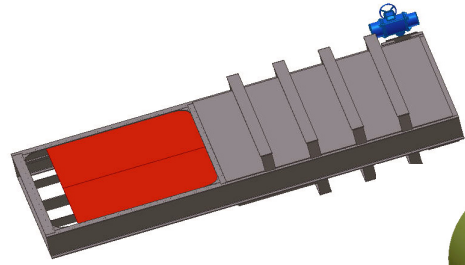
Our engineering team performs analyses on SPX Heat Transfer brands as well as other manufacturers' equipment.

Our capabilities include:

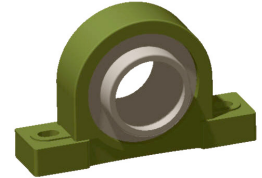
- Structural analysis of existing condenser units
- Piping analysis internal to the condenser shell
- Condenser performance analysis based on field measurement data (provided by others)
- Life extension analysis projects including feedwater heater re-rates
- Analysis and resolution of tube bundle performance problems
- Condenser life extension analysis with recommendations for modification
- Steam Jet Air Ejector (SJAE) problem resolution
- Tube vibration analysis
- Technical specification development
- Waterbox replacement studies
- Finite Element Analysis (FEA) of condenser components such as waterboxes

Technical field services are available upon request

Non OEM parts available upon request



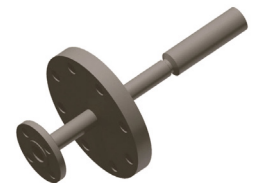
*Damper Assembly*



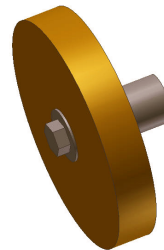
*Damper Bearing*



*Ejector Body*



*Ejector Nozzle*



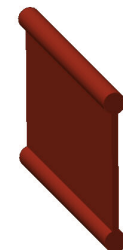
*Condenser Anode*



*Condenser Dome Hood Spray Nozzle*



*Condenser SS Bellows Expansion Joint*



*Condenser Rubber Dogbone Expansion Joint*



SPX HEAT TRANSFER LLC | TULSA, OK 74116

P: 918 234 6000 F: 918 234 3345 [custinfo@spxht.com](mailto:custinfo@spxht.com)

[spxheattransfer.com](http://spxheattransfer.com)

In the interest of technological progress, all products are subject to design and/or material change without notice.

Rothemühle products are offered with consent of Licensor, Balcke Dürr GmbH. \*Ljungström® is a registered trademark of ARVOS Group, Wellsville, NY.